



Great River Regional Waste Authority



Solid Waste & Recycling Services Guide



More than a Landfill

Table of Contents

Important Information	Page 3
Recyclables	Page 4 - 7
Electronics (E-Waste)	Page 4
Appliances.....	Page 4
Composting/Wood Waste	Page 5
Wood Waste.....	Page 5
Tires.....	Page 5
Batteries	Page 5
Florescent Bulbs.....	Page 5
Metals.....	Page 5
Cardboards	Page 6
Tin Cans	Page 6
Newspapers/Magazines	Page 6
Glass.....	Page 6
Office Papers	Page 7
Plastic Bottles & Jugs	Page 7
Rigid Plastic & Plastics.....	Page 7
Environmental Policy Statement	Page 8
Community & Employee Safety.....	Page 9
Shingle Recycling Program	Page 10 - 11
Household Hazardous Waste Program	Page 12 - 13
Medical Disposal.....	Page 14
Property Overview.....	Page 15

SA F ETY
RED U CE
ENVIRONMENT T
RESO U RCES
R ECYCLE
R E USE

Important Information

Great River Regional Waste Authority

319-372-6140
2092 303rd Avenue
Fort Madison, IA 52626

319-524-6175
111 Carbide Lane
Keokuk, IA 52632

Business Hours

Monday-Friday 8:00 a.m. - 4:00 p.m.

Saturday 9:00 a.m. to Noon

Drop-off Recycling Trailers located in:

Keokuk
Montrose
Franklin

West Point
Argyle
Wever

Denmark
Mt. Hamill
Charleston

Help us recycle more efficiently when using our drop-off sites. Please place all recyclables loose in their appropriate containers, do not put full plastic bags in the containers. All loads must be tarped or secured. If not tarped or secured an additional \$10 fee will be applied to each load each time. Thank You for Recycling!

If you have any questions or concerns about your residential trash, brush or recycling pick-ups please contact:

Fort Madison

City of Fort Madison

319-372-7700

Keokuk

City of Keokuk

319-524-2050

Closed on the following Holidays:

New Years Day, Labor Day, Memorial Day, Thanksgiving, July 4th and Christmas

RECYCLABLES

ELECTRONICS RECYCLING (E-WASTE)

GRRWA has mandated that electronics cannot be put in the land-fill. Please place all electronics in the appropriate bins provided at GRRWA and the Transfer Station. If you are unsure as to where they should be placed, simply ask the Scale-Clerk on duty. The following examples of items that are taken Free of Charge

- Computer towers
- Radios
- CD & DVD Players, and VCR's
- Cell phones



Basically any item with a cord is considered an electronic.

The following items are taken for a fee; please contact GRRWA for cost.

- TV's, Monitors, Laptops, Tablets
- Consoles, Projection and Big Screen TV's

APPLIANCE RECYCLING

DNR mandates no appliances can be placed in the landfill. Contact GRRWA with cost for disposing appliances.

Examples of appliances:

- Microwaves
- Refrigerator
- Stoves and ovens
- Washer/dryer
- Water heaters and softeners
- Dishwashers
- Dehumidifier/humidifier



All appliances will be placed in their designated area after scale clerk has determined cost and gives customer a sticker to be placed on appliance.

RECYCLABLES

COMPOSTING

Grass, leaves, small branches (less than an inch in diameter) and twigs are free of charge.

ALL branches larger than an inch in diameter are charged a tipping fee. Scale clerk will inspect loads of brush to determine if there will be a charge.

WOOD WASTE

Untreated wood (i.e. pallets, untreated lumber, crates, etc.) Contact GRRWA for tipping fee rate.

TIRES

GRRWA accepts tires of all sizes. Contact GRRWA for tire fees.

BATTERY RECYCLING

GRRWA recycles rechargeable batteries for free. (i.e. camera batteries, Lithium batteries, cell phone batteries and NI-CAD)

Contact GRRWA for car battery fees.

FLORESCENT BULB RECYCLING

Contact GRRWA for florescent bulb fees. Fees are based on the length of the bulb.

METAL RECYCLING

There is NO CHARGE for metal of any sort. GRRWA recommends that all metal be placed in the metal bin provided at the Convenient Drop Off area. GRRWA grinds all waste and metal cannot be placed in the grinder.

MUNICIPAL SOLID WASTE

GRRWA grinds all waste to save landfill space and lengthen the life of the landfill. We ask that all residents & industries help us extend the life of our landfill by recycling everything as often as possible.

PLEASE DO NOT JUST THROW IT AWAY!

Contact GRRWA with any questions and for Solid Waste tipping fees.

RECYCLABLES

CARDBOARD

Acceptable:

Cardboard Boxes

(all boxes must be empty and broken down)

Brown Paper Sacks • Chipboard

Cereal Boxes (please remove liners)

Pizza Boxes • Beverage Containers



TIN CANS

Acceptable:

All tin and aluminum cans are acceptable.

Metal lids from jars are also acceptable.

NEWSPAPERS & MAGAZINES

Acceptable:

Newspapers • Advertising Supplements • Magazines

Unwanted Residential Mail

Catalogs • Phone Books • Books (paperback and hard cover)

Please remove all plastic wrap around magazines and catalogs. Do not bind newsprint or magazines.



GLASS

Acceptable:

Dishes and Glass Containers of All Colors.

NO Ceramic, Mirrors or Windows.

RECYCLABLES

OFFICE PAPER

Acceptable:

Computer, typing, writing and photography paper; envelopes; file folders and shredded office paper.

Not Acceptable:

Carbon paper, blueprint paper, film, photographs or anything with metal spirals or fasteners.

PLASTIC BOTTLES & JUGS

Plastics accepted for recycling in Lee County are types 1 through 7. Check the bottom of the container for the recycling logo. The number identifying the type of plastic is inside the logo.

Acceptable (examples):

Food Containers
Milk Jugs
Detergent Bottles
Yogurt Containers
Soda, Juice and water Bottles

Shampoo Bottles
Butter Containers
Bleach Jugs
PET Containers

RIGID PLASTIC & PLASTICS

Acceptable:

Toys and Buckets (call for specifics)

Plastic bags of any kind ARE NOT ACCEPTABLE

Reuse plastic bags or recycle them inside area stores.

DO NOT recycle plastic bags in curbside bins or drop-off containers.

Great River Regional Waste Authority is an Environmental Management System



Environmental Policy Statement

Great River Regional Waste Authority is dedicated to excellence by providing superior customer satisfaction without sacrificing the safety of our employees or customers. GRRWA strives to be the best stewards of the environment by meeting and exceeding our goals and expectations. GRRWA will reduce our environmental footprint for our future generations by focusing on these 7 categories:

- 1) Yard Waste Management
- 2) Household Hazardous Waste Management
- 3) Water Quality Improvement
- 4) Greenhouse Gas Reduction
- 5) Recycling Services
- 6) Environmental Education
- 7) Community and Employee Safety



Community & Employee Safety

Please help us in keeping this a safe and healthy work environment for our employees by following the following guidelines below:

Absolutely NO syringes (hypodermic needles) or medical equipment of any kind. You can obtain syringe containers and drop off the full containers at the GRRWA offices.

We do not accept Styrofoam, food waste, toys, insulation, house siding, clothes or household trash of any kind.

All recyclables must be placed in bins loose. PLASTIC BAGS ARE NO LONGER RECYCLABLE. DO NOT PUT FULL BAGS OF RECYCLABLES IN THE RECYCLING BINS!

BAGS OF RECYCLABLES ON RESIDENTIAL ROUTES
WILL NOT BE PICKED UP.

For more information call 319-372-6140.

ALL LOADS MUST BE TARPED OR SECURED!

All loads must be tarped or secured. If not tarped or secured an additional \$10 fee will be applied to each load each time.

Thank You for Recycling!



Great River Regional Waste Authority's Shingle Recycling Program

*One Roof Equals Two Barrels
of Oil!*

OUR PROCESS

REMOVE

Roofing contractors keep shingles and separate from any other garbage and construction materials from the load of shingles. Only “clean loads” are accepted as part of this program. (“Clean Load”: Shingles, nails, and tar paper only)

DELIVER AND WEIGH

Contractors deliver their shingles load to the landfill scale house where it will be weighed. They will then determine whether the load is a “clean load” and meets the discount guidelines.

UNLOAD

After being accepted into the landfill, the shingle loads are in loaded in one of two stockpiles as directed by GRRWA staff.

RECYCLE

Once the shingles are determined non-asbestos, they are take to a hot-mix asphalt company that will process the shingles to be reused to create new asphalt roads.

BENEFITS OF JOINING THE SHINGLE RECYCLING PROGRAM

DISCOUNT PRICE FOR RECYCLING

Roofing companies and residents can save money and keep asphalt shingles out of the landfill by recycling them at our landfill. GRRWA offers a discounted tipping fee when roofing companies or residents recycle asphalt shingles and meet the discount guidelines.

Great River Regional Waste Authority's Shingle Recycling Program

OTHER BENEFITS

- Listed as a ‘green roofing contractor’ in employee reference materials, on web-site, and over the phone to help potential customers find “green” contractors.
- Trash bags for collecting job-related garbage to keep this waste separate from the shingles.
- Help conserve landfill space by recycling a valuable natural resource.

WHY RECYCLING SHINGLES MATTERS

- Reduce the need for foreign oil- Manufactured shingles consists of 40% asphalt. Recycling shingles reduces the amount of virgin resources used to make shingles.
- Reduce what goes in the landfill- Shingles take 400 years to breakdown in a landfill and more than 11 million tons of shingles end up there annually.
- Asphalt shingles can be reused to build new roadways and reduce cost of paving projects. While residents may not pay for a road project, they may pay for public road projects in one way or another. Recycling your roof helps you local state and national governments.

INTERESTED IN JOINING OUR PROGRAM? CALL US TODAY!



Great River Regional Waste Authority's Household Hazardous Waste Program

REDUCE, REUSE, RECYCLE!

*Please think of our future and properly dispose of
all of your hazardous material.*

GRRWA conducts several Household Hazardous Waste collection events throughout the year to collect used and unwanted hazardous materials. Please watch your local news sources for our HHW Mobile Events or call us for upcoming event dates and locations.

Become familiar with HHW Materials:

Corrosive, meaning they can corrode or burn your skin on contact.

Toxic, meaning they can be lethal to humans and animals if swallowed, inhaled or absorbed by the skin.

Flammable, meaning they may ignite even under normal working conditions.

Explosive/Reactive, meaning it reacts violently when exposed to heat, sudden shock, pressure, or other chemicals.

Please never dispose of any of these items down your drain, they eventually pollute our rivers.

The following is a list of some of the items we accept:

- Fertilizers
- Herbicides
- Household & auto cleaning products
- Insecticides
- Oil based paints
- Paint thinners & solvents
- Pesticides
- Rechargeable batteries
- Swimming pool chemicals
- Motor oil
- Antifreeze
- Car batteries
- Propane tanks
- And more!

Great River Regional Waste Authority's Household Hazardous Waste Program

Here are some of the items we DO NOT accept at our HHW Events:

Ammunition: Call your local fire department for suggestions.

Asbestos: Should only be removed by a trained contractor.

Carbon Monoxide Detectors: These can be disposed of with your regular household garbage.

Explosives, including fireworks: Call you local police station for suggestions.

Unknown materials: Items without any type of identification.

Unused medication: You can find more information online. The best form of disposal is within your regular household garbage.

Latex Paint: Dry the paint with absorbent materials such as shredded newspapers, kitty litter, saw dust or dirt. Seal in plastic trash bag and dispose in your regular household garbage.



Syringe Disposal



Proper Disposal Sites

- Household Hazardous Waste Facility
- Hospital, Clinic, or Pharmacy
- Mail-Back Container

It's illegal to dispose of sharps in the trash, recycling bins, and compost containers. Never place used needles, syringes or lancets in the garbage or recycling containers.

MEDICATION DISPOSAL Safety Tips

Keeping YOU and your family safe!

Dispose of expired or unwanted prescriptions and over-the-counter drugs safely. NEVER dispose by flushing down the toilet or other drain. Doing this can cause harm to the planet, animals, YOU and your family.



Where can I properly dispose of my unused medications?

Check to see if there are any drug take-back programs near you. If there is not a program near you, follow the steps in the Staying Safe box on the right to dispose of unwanted drugs.

Why do I need to properly dispose of my unused medications?

It isn't safe to flush drugs down drains or throw them out in the trash without using the necessary steps. Drugs flushed down drains can harm the water supply that we drink, and wildlife. Dispose of drugs the right way to prevent someone taking them by accident, or through an illegal sale. Protect children and pets from harm caused by accidental ingestion.

Who can I talk to if I am unsure about how to properly dispose of my unused medications?

Ask your pharmacist how to safely dispose of your medications or contact GRRWA for help:

STAYING SAFE

How can I stay safe when disposing of unused medicines?

- Keep prescriptions in the original container. This will help identify the contents if they are accidentally ingested.
- Before disposing, mark out your name and prescription number of the label for safety.
- Add some water or soda to pills to start dissolving them. Mix pills or liquid drugs with something that you cannot eat, like cat litter or dirt.
- Close the lid and secure with duct or packing tape.
- Place the bottle(s) inside a non-see through container like a coffee can or detergent bottle.
- Tape that container closed.
- Place the container in the trash. Do not put in the recycle bin.

PROPERTY OVERVIEW

Office



Landfill



E-Waste



Bales



Recycling Trailers



Milk Jugs/Plastics



Shingle Recycling Bays



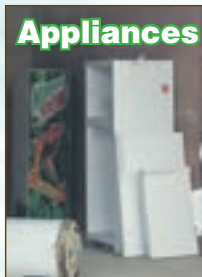
Tires



Household Hazardous Waste



Appliances



Convenient Drop-Off



Great River Regional Waste Authority

319-372-6140

**2092 303rd Avenue
Fort Madison, IA 52626**

319-524-6175

**111 Carbide Lane
Keokuk, IA 52632**



Business Hours

Monday-Friday 8:00 a.m. - 4:00 p.m.

Saturday 9:00 a.m. to Noon